

Service Manual

DNPOS70P-5BTH-N3700
DNPOS70P-5WTH-N3700
DNPOS70P-5BT-N3710
DNPOS70P-5WT-N3710
DNPOS70P-5BT-J3710
DNPOS70P-5WT-J3710



Copyrights

©2016. All rights reserved. The information in this document is subject to change without prior notice in order to improve reliability, design and function and does not represent a commitment on the part of the manufacturer.

This document contains proprietary information protected by copyright. All rights are reserved. No part of this manual may be reproduced by any mechanical, electronic, or other means in any form without prior written permission of the manufacturer.

All trademarks are property of their respective owners

Liability Disclaimer

In no event will the manufacturer be liable for direct, indirect, special, incidental, or consequential damages arising out of the use or inability to use the product or documentation, even if advised of the possibility of such damages.

The information in this document is subject to change without notice

Contents

Copyrights	ii
Liability Disclaimer	ii
Contents.....	1
1. Before You Start	2
2. Opening the Device.....	3
2. Main board Disassembly	4
3. RAM Disassembly	5
5. Touch Panel Control Board Disassembly	6
6.Power Switch Disassembly	8
7.Mainboard and cable Disassembly	9
8.Speakers Disassembly	10
9.LCD Panel Disassembly	11

Before You Start

1. Please unplug the power cable before you start to work.
2. Please read and follow the instructions in this document carefully. Failure to follow these instructions could damage your device and void the warranty.

1.1. Tools Suggested

All procedures in this document require the following tools:



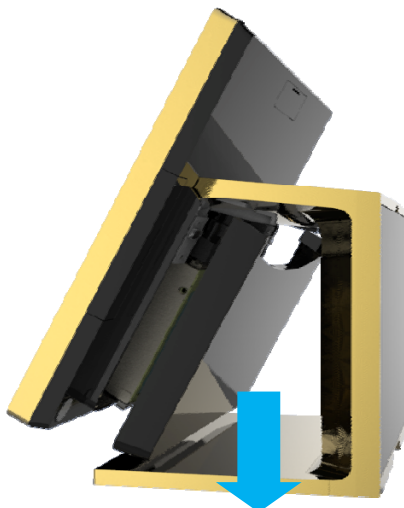
**#1 Phillips screwdriver
(Magnetized suggested)**



**1.5 mm hexagon socket spanner
(Magnetized suggested)**

Opening the Device

1. Remove the I / O cover.



2. Remove all Cable. (50 pin SCSI cable & power cable)

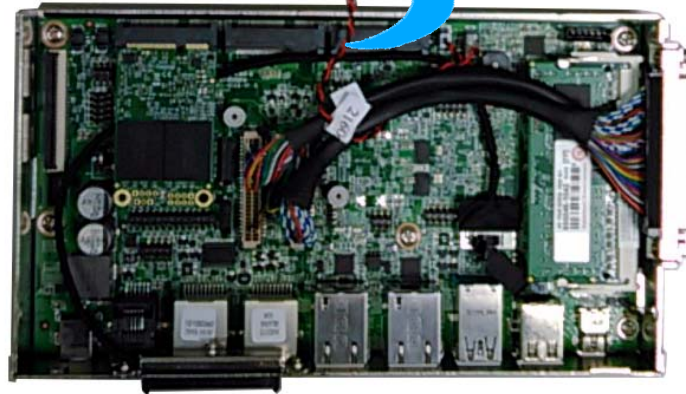
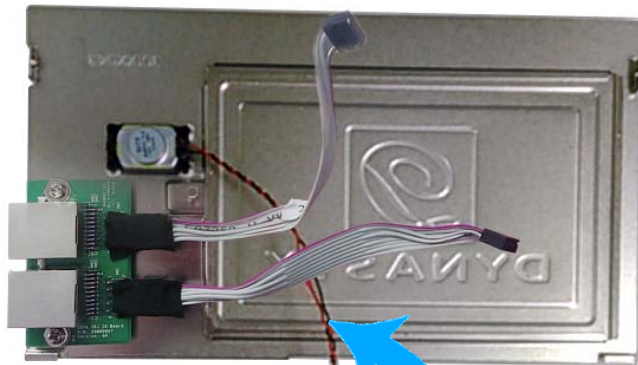
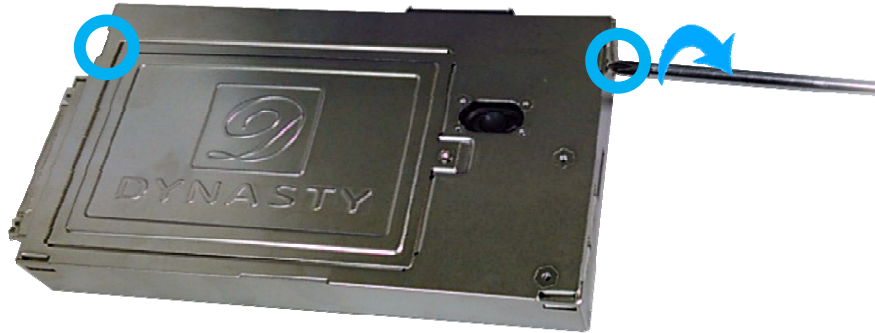


3. Hold the main board box, slide the release latch to the right.



Main board Disassembly

1. Remove the screw on main board box.
2. Loosen the three screws in blue circle as shown below by #1 Phillips screwdriver.



RAM Disassembly

1. Release the two ejectors on the slot by pushing them, and remove the RAM from the slot.



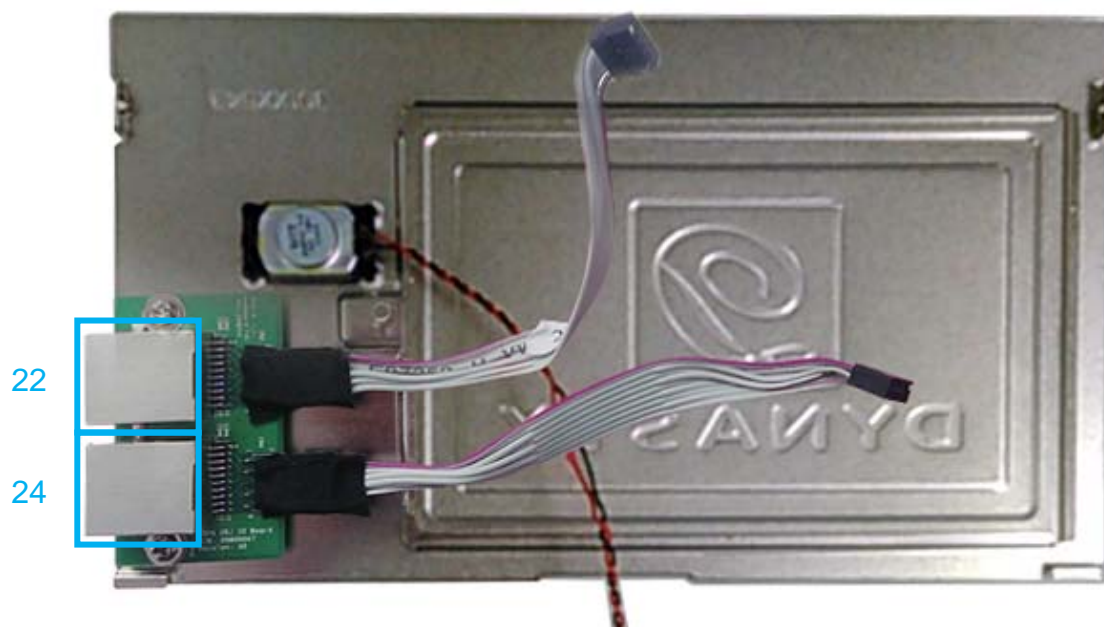
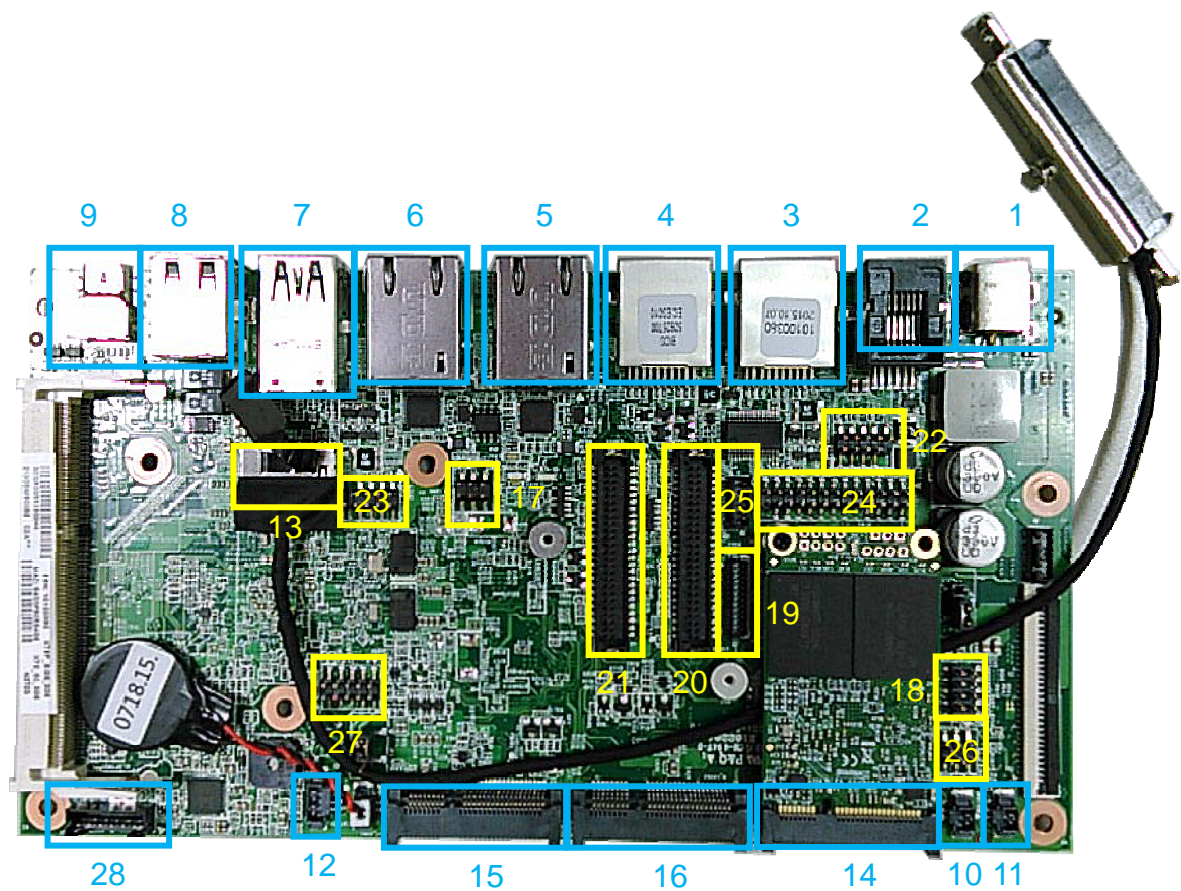
2. Remove the old RAM.



3. Align and insert the new RAM in the slot and push both ends of the RAM down until the ejectors snap into place.



Touch Panel Control Board Disassembly

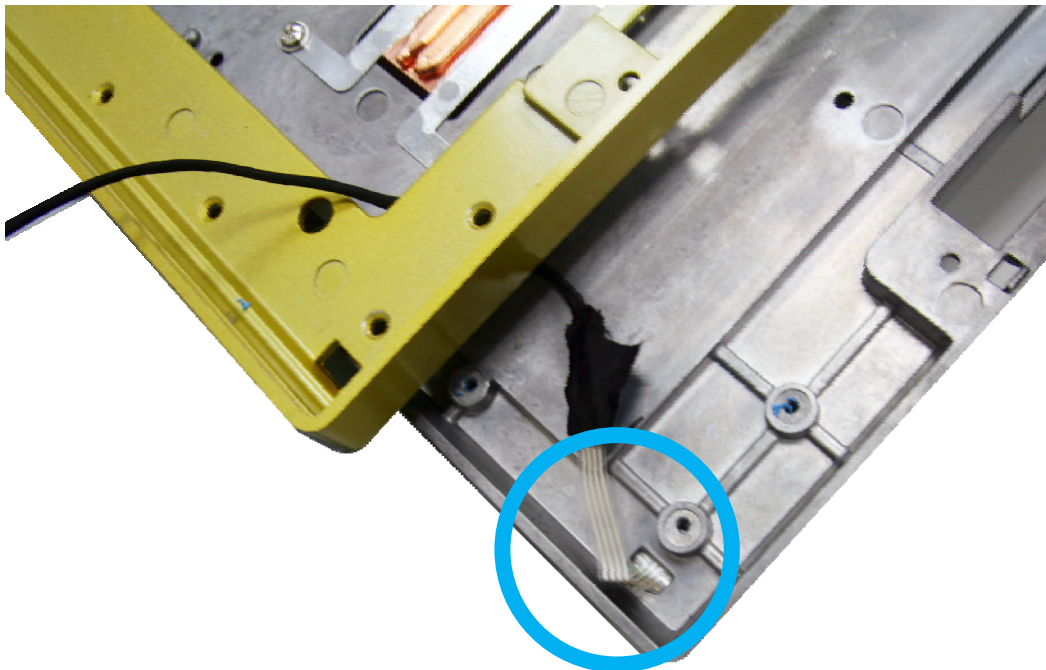


Remark	Connector	Function
--------	-----------	----------

Remark	Connector	Function
1	DC-IN	19-24V IN
2	RJ12	Cash Drawer
3	RJ50_COM2	COM Port
4	RJ50_COM1	COM Port
5	LAN_CON1	LAN 1 Port
6	LAN_CON2	LAN 2 Port
7	USB30_1	USB 3.0 Port
8	USB_CON2	USB 2.0 Port
9	MINI_DP1	Display Port
10	SW_CON1	Power Button
11	IBUTTON	I-button Function
12	INT_SP	Internal Speaker
13	SATA1	SATA Hard Disk
14	MPCIE2	m-SATA
15	M_CARD1	PCIE WLAN/USB
16	M_CARD2	PCIE WLAN/USB
17	LED_CON1	Power/ Sata/ Lan LED
18	DIDO	DIDO GPIO
19	CN2	EC Debug
20	LVDS3	DP + COM +USB +SW + POWER LED
21	LVDS4	DP + COM +USB +SW + POWER LED
22	COM3	Com Port
23	COM4	Comport
24	LPT_CON1	Printer Port
25	PS2_CON1	PS2 Keyboard & Mouse
26	BAT_CON	BATTERY I2C
27	J1	POWER +3V,+5V,+5VS5,+3VS5
28	HPOUT	MIC,HPOUT

Power Switch Disassembly

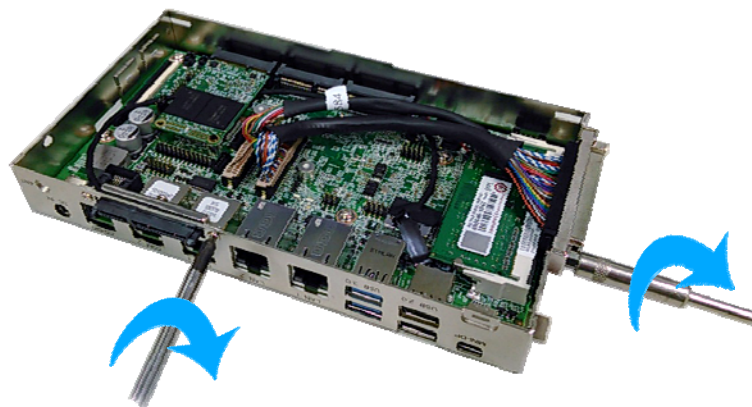
1. Remove the power switch from the device.



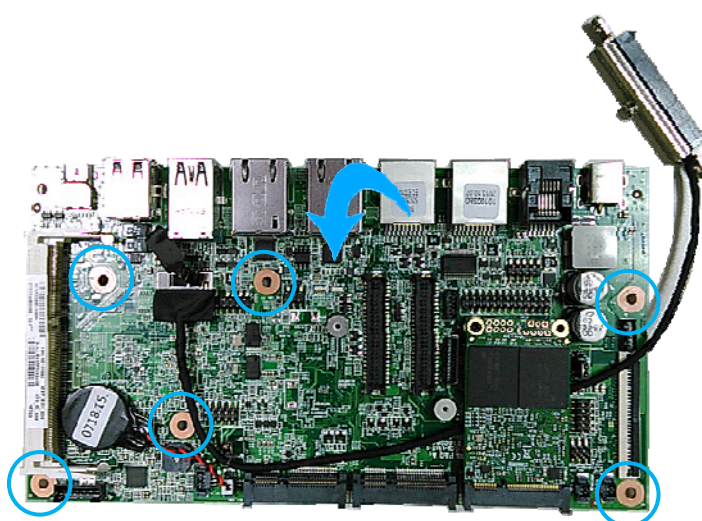
※ The power switch is customize, please contact EBN.

Mainboard and cable Disassembly

1. Loosen the four hexagonal screws by 1.5 mm hexagonal socket spanner as shown below.



Loosen the four screws by #0 Phillips screwdriver as shown below.

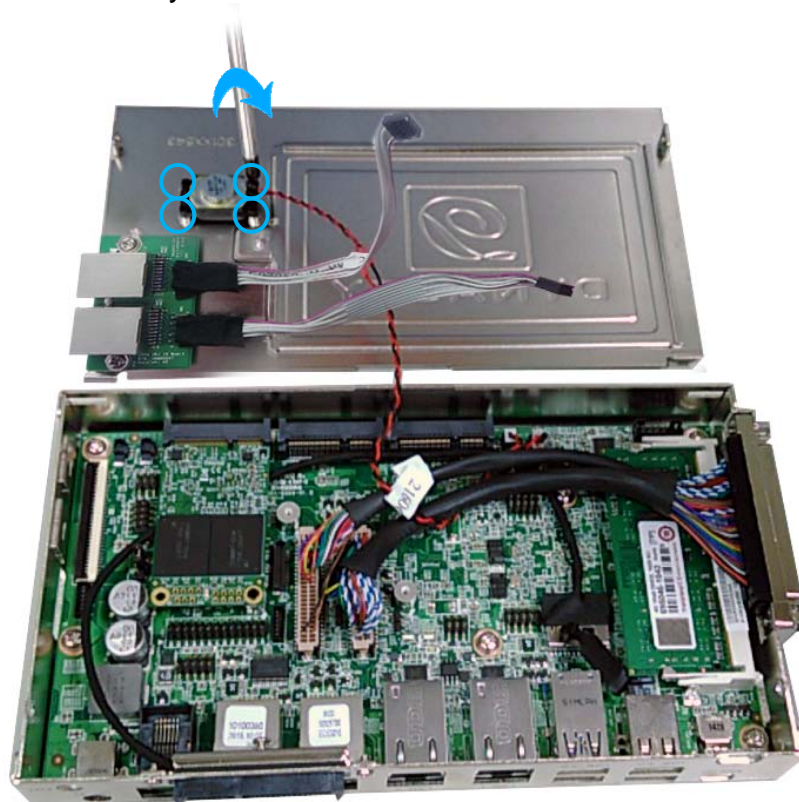


2. Remove the main board from the device as shown below.



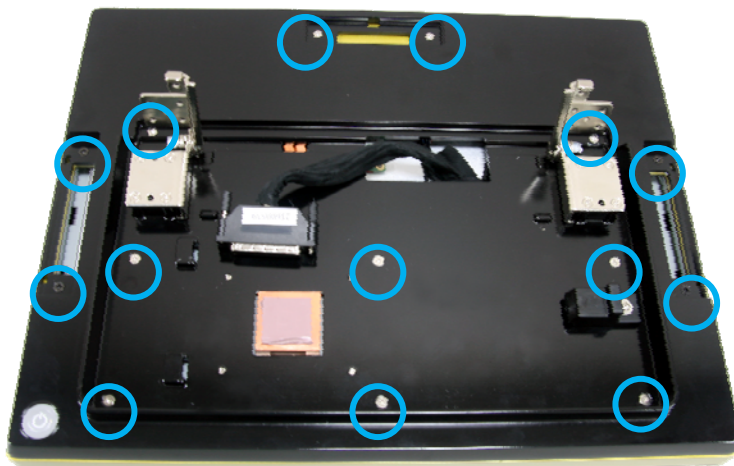
Speakers Disassembly

1. Loosen the four screws by #1 Phillips screwdriver as shown below and remove the speaker assembly from the device.

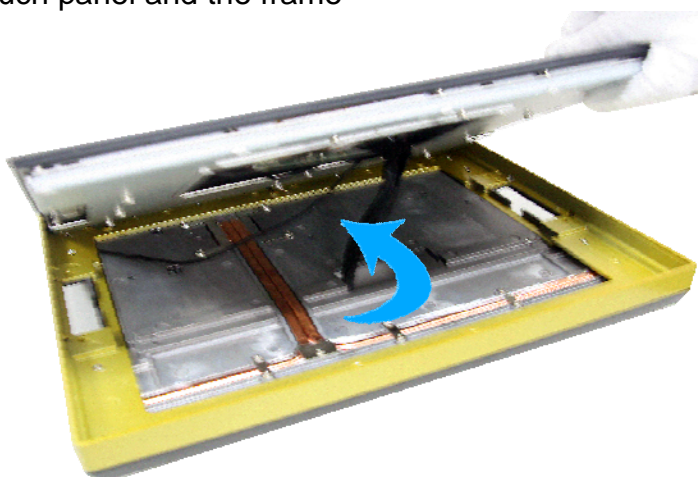


LCD Panel Disassembly

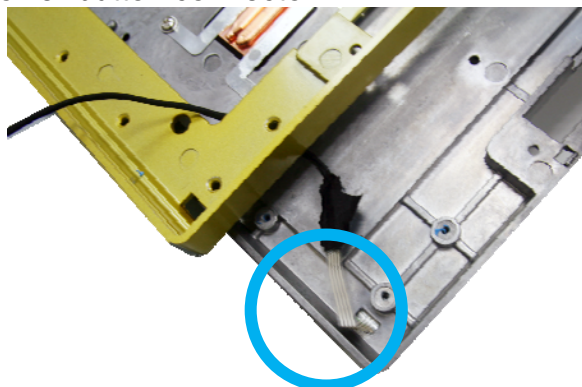
1. Loosen the fourteen screws in blue circle as shown below by #1 Phillips screwdriver.



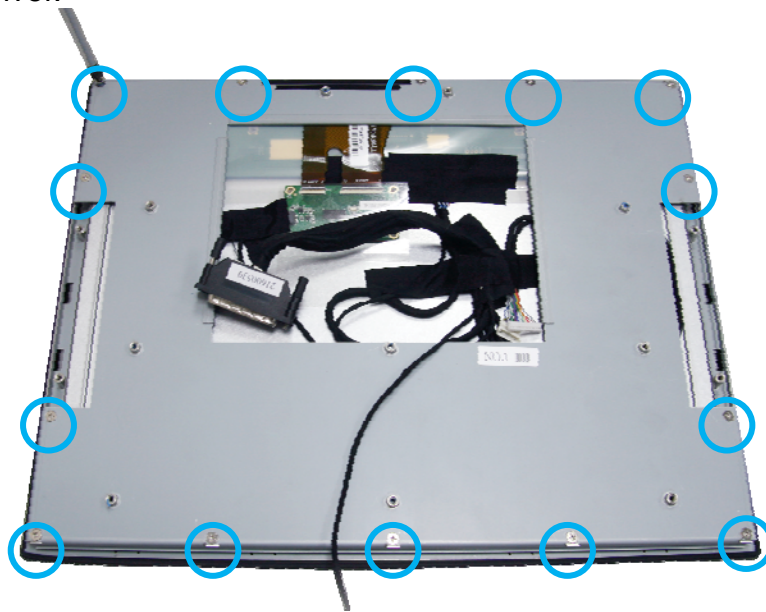
2. Open the touch panel and the frame



3. Remove the power button connector



4. Loosen the fourteen screws in blue circle as shown below by #1 Phillips screwdriver.



5. Remove the LCD panel assembly and loosen the four screws holding the LCD.

